

**PROCEEDINGS**  
OF THE  
CALIFORNIA ACADEMY OF SCIENCES  
FOURTH SERIES

VOL. XXII, No. 9, pp. 195-206; 2 text figures.      JULY 20, 1939

---

**THE TEMPLETON CROCKER EXPEDITION OF THE  
CALIFORNIA ACADEMY OF SCIENCES, 1932  
No. 38**

**FUNGI FROM THE GALAPAGOS AND  
OTHER PACIFIC COASTAL ISLANDS**

BY  
LEE BONAR  
*Department of Botany  
University of California*

Botanists and other members of expeditions from the California Academy of Sciences to the Galapagos Islands, Revillagigedos Islands, Guadalupe Island, Cocos Island, and some points on the west coast of Central America, have made certain collections of fungi. The greater number of collections were made by Mr. John Thomas Howell, botanist for the Templeton Crocker Expedition in 1932. Dr. Alban Stewart made a number of collections with the expedition to the Galapagos Islands, 1905-06, and Dr. H. L. Mason made a few collections on the Revillagigedos and Tres Marias Islands in 1925. These collections have been studied and such as could be determined are herewith reported.

Relatively few fungi have been collected from these Pacific coastal islands, since reports on the floras have dealt almost entirely with other groups of plants.

J. M. Berkeley, *Ann. Mag. Nat. Hist.*, **9**: 444, 1842, lists one fungus, *Polyporus igniarius* Fr. var. *scaber* Berk., collected by Charles Darwin, Galapagos Islands.

J. D. Hooker, Trans. Linn. Soc., **20**: 164, 1847, also lists one species, *Schizophyllum commune* Fr., from Darwin's collections in the Galapagos.

W. F. Farlow, Proc. Amer. Acad. Arts & Sci., **38**: 82-83, 1902, recorded three fungi from the Galapagos, viz.:

*Favolus cibaris* Mont.  
*Fomes lucidus* Fr.  
*Schizophyllum alneum* Schroet.

Such other collections as may have been made I have not found reported, and it is of interest to record here the material that has been under study. Seventy-five species have been identified, and these are from collections distributed as follows:

Galapagos Islands.....	59
Revillagigedos Islands.....	18
Cocos Island.....	8
Tres Marias Islands.....	5
Guadalupe Island.....	3
Costa Rica.....	4
Nicaragua.....	5
Lower California.....	1

These records extend very considerably the known range of a number of species, and three species are reported as new.

The writer wishes to express his appreciation to the mycologists who have given aid and suggestions in this study, especially to Dr. G. B. Cummins, Dr. C. J. Humphrey, Dr. G. W. Martin, Dr. J. H. Miller, Dr. L. W. Miller, Dr. J. A. Stevenson, and Dr. E. M. Wakefield.

Specimens of the material here reported are deposited in the herbarium of the California Academy of Sciences, San Francisco, and with the exception of species for which material was very limited, a complete set is deposited in the herbarium of the University of California at Berkeley. Specimens determined, as noted in the text, by the above named mycologists were in almost all cases retained by them as a part of their collections. Duplicate material will be available for distribution to a limited number of interested students from a goodly number of the collections.

A small number of collections remain as yet undetermined, and may be reported at a later date by students to whom they have been submitted.

## MYXOMYCETES

**Craterium leucocephalum** (Pers.) Ditm. var. *scyphoides* List., Mycetozoa, **96**, 1911. On living leaves, Abingdon Island, Galapagos, Sept. 21, 1906, *Stewart No. 8706*. (Det. G. W. Martin). Previously reported from the Galapagos Islands.

**Diachæa leucopoda** Rost., Sluzowce Monografia, 190, 1875. On living leaves, Abingdon Island, Galapagos, Sept. 4, 1906, *Stewart No. 8526*.

**Physarum bogoriense** Racib., Hedwigia, **37**: 52, 1898. On living leaves, Abingdon Island, Galapagos, Sept. 21, 1906, *Stewart No. 8707*. (Det. G. W. Martin).

**Stemonitis fusca** Roth. Roem. and Ust., Mag. Bot., **1**: 26, 1787. On dead bark, Post Office Bay, Charles Island, Galapagos, May 17, 1932, *Howell*.

**Stemonitis splendens** Rost., Sluzowce Monografia, 195, 1875. On dead wood, Academy Bay, Indefatigable Island, Galapagos, May 2, 1932, *Howell*.

## ASCOMYCETES

## DOTHIDIALES

*Phyllachoraceæ*

**Ophiodothella Fici** E. A. Bessey, Mycologia, **11**: 55, 1919. On *Ficus cotinifolia* Stokes, Braithwaite Bay, Socorro Island, March 26, 1932, *Howell*. Previously reported from Florida and Cuba.

**Phyllachora Acalyphæ** Bonar, new species

## Figure 1

Maculæ amphigenæ, superne atrobrunnæ, inferne olivaceæ, marginibus angustis viridibus, orbiculares, 1-2 mm. diam., dein confluentes; stromata minuta, in maculis mediis, subepidermalia, punctiformia, atra, plerumque hypophylla; loculi 4-12 in quoque stromate, sæpe lateraliter appanati, membrana stromatica ad epidermidem lateraque crassa, atra, intus obsolescente, 80-125  $\mu$  lati, 125-150  $\mu$  longi, poro aperti; asci fusoido-clavati, octospori, 70-80 x 10-12  $\mu$ , sporidiis oblique uniseriatis vel biseriatis; sporidia navicularia, hyalina, continua, 19-22 x 5-6  $\mu$ ; paraphyses filiformes, simplices vel ramosæ.

Spots amphigenous, blackish brown above, olivaceous below, with a narrow green border, circular, 1-2 mm. diameter, or becoming confluent; stromata minute, central in spots, subepidermal, punctiform, black, mostly hypophyllous; locules 4-12 in a stroma, often laterally flattened, with heavy black tissue toward leaf surface and on sides, scarcely developed on inner side, 80-125  $\mu$  wide x 125-150  $\mu$  high, opening by a pore; asci fusoid-clavate, 8-spored, 70-80 x 10-12  $\mu$ , spores obliquely uniseriate to biseriate; spores navicular, hyaline, 1-celled, 19-22 x 5-6  $\mu$ ; paraphyses filiform, simple or branched.

*Type:* C. A. S. Herb. No. 261370. On leaves of *Acalypha umbrosa* Brandg., Socorro Island, March 29, 1932, Howell.

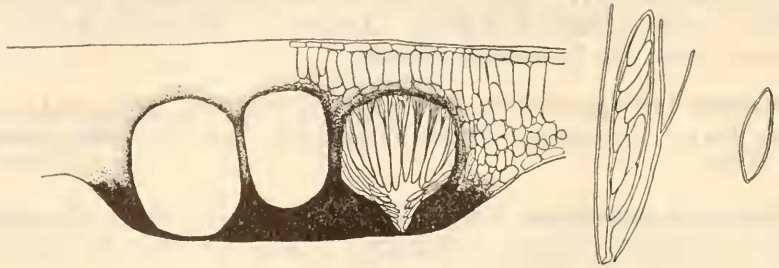


Fig. 1. *Phyllachora Acalyphæ* Bonar, new species. Left, section through leaf showing stroma and locules; middle, ascus and paraphyses; right, ascospore.

**Phyllachora Scleriæ** Rehm, *Hedwigia*, **39**: 232, 1900. On *Cyperus duripes* Johnston, Clarion Island, March 23, 1932, Howell.

Spots somewhat larger than those reported on *Scleria* from Brazil. The spores are slightly wider than stated in the original record, but the occasional obpyriform spores reported by Rehm are regularly found with the obtuse end occupying the distal end of the ascus.

## SPHÆRIALES

### *Sphæriaceæ*

**Zignoëlla truncata** Rehm, *Hedwigia*, **40**: 106, 1901. On dead bark of *Zanthoxylum Limoncello* Planch. and Oerst., near Academy Bay, Indefatigable Island, Galapagos, May 4, 1932, Howell.

Our material varies slightly from Rehm's characterization of the species in that the ostiole is of a distinctly lighter shade than the perithecial wall. However, this character does not seem sufficient to warrant a different name.

### *Pleosporaceæ*

#### **Leptosphæria Phoradendri** Bonar, new species

##### Figure 2

Perithecia amphigena, in foliis dense disposita in zonulis remotis vel confluentibus, maculis manifestis nullis, subepidermalia, cuticula tecta, punctulata, atra, late pyriformia, circum ostiolum pariete crasse carbonaceo, alibi membranaceo et paulum carbonaceo, 250–300  $\mu$  diam.; asci basillares, octospori, ampullacei, stipite brevo angustoque, parietibus ad apicem incrassatis, 150 x 30  $\mu$ ; ascosporidia crebra, 3–4-seriata, inasco basilaria, ellipsoideo-cylindracea, 3-septata, ad septum medium paulo constricta, castanea, 37–50 x 10–12  $\mu$ ; paraphyses multæ, copiose ramosæ, irregulares, anastomosantes, hyalinæ.

Status conidicus pycnidia exhibens specie similia peritheciolorum in foliis; pycnidia amphigena, dispersa, subepidermalia, globosa, ostiolo poroideo erumpentia, 150–225  $\mu$  diam., pariete carbonaceo, superne incrassato, inferne membranaceo; conidia copiosa, bacilliformia, hyalina, continua, 6–9 x 0.75–1  $\mu$ ; conidiophora simplicia vel ramosa, quam conidia longiora.

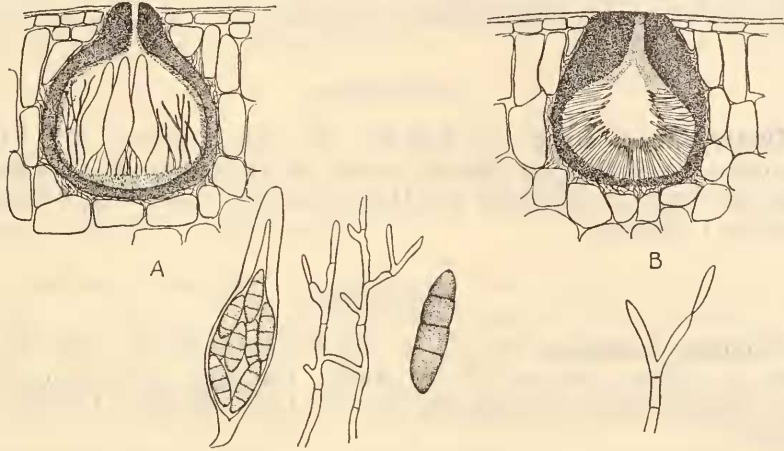


Fig. 2. *Leptosphaeria Phoradendri* Bonar, new species.

- A. Section showing structure and position of perithecium in leaf; below, detail of ascus, paraphyses, and ascospore.  
 B. Section showing structure and position of pycnidium in leaf; below, conidiospores and conidia.

Perithecia amphigenous, thickly scattered over leaves in small isolated or confluent areas, not forming evident spots; subepidermal, remaining covered by cuticle, punctate, black, broadly pyriform, wall heavy carbonaceous around ostiole, membranaceous and slightly carbonized below, 250–300  $\mu$  diameter; asci basal, flask-shaped, with short narrowed stipe, walls thickened toward apex, 150 x 30  $\mu$ ; ascospores crowded, 3–4 seriate, basal in ascus, ellipsoid-cylindric, 3-septate, slightly constricted at median septum, chestnut brown, 37–50 x 10–12  $\mu$ ; paraphyses numerous, much branched, irregular and anastomosed, hyaline.

Conidial stage forming pycnidia similar to perithecia in appearance on leaves; pycnidia amphigenous, scattered, subepidermal, globoid, erumpent by poroid ostiole, 150–225  $\mu$  diameter; wall carbonized, thickened above, membranaceous below; conidia abundant, bacilliform, hyaline, 1-celled, 6–9 x .75–1  $\mu$ ; conidiophores simple or branched, longer than conidia.

*Type:* C. A. S. Herb. No. 261369. On living leaves of *Phoradendron Townsendii* Trel., Socorro Island, March 27, 1932, Howell.

#### *Clypeosphaeriaceæ*

*Peltosphaeria vitrispora* (Cke. and Hk.) Berl., *Icones Fungorum*, 2: 109. On decorticated wood, Socorro Island, March 26, 1932, Howell.



This organism was originally named *Pleospora vitrispora* Cke. and Hk. from dead twigs from California. Many of the perithecia are located in elliptic elevations on the surface of the wood, the surrounding tissue being eroded away. This corresponds to the illustrations given by Berlese of the original material. The ascospores are variable in size and septation with age.

#### *Diatrypaceæ*

**Diatrype microstega** Ell. and Ev., N. Amer. Pyren., 574, 1892. On dead wood, Socorro Island, March 26, 1932, *Howell*. Formerly reported from a collection by Harkness from San Francisco Bay Region, California.

#### *Xylariaceæ*

**Camillea sagræana** (Mont.) B. and C., Exot. Fungi, Jour. Acad. Nat. Sci. Phila., 2nd. ser. 2: 285, 1853. On dead wood, Post Office Bay, Charles Island, Galapagos, May 17, 1932, *Howell*. (Det. W. W. Diehl.)

**Daldinia concentrica** (Bolt.) Ces. and DeNot. var. *microspora* (Starb.) Theiss., Ann. Myc., 7: 3, 1909. Near Fortuna, Indefatigable Island, Galapagos, May 11, 1932, *Howell*.

**Xylaria arbuscula** Sacc., Mich., 1: 249, 1878. Academy Bay, Indefatigable Island, Galapagos, May 6, 1932, *Howell*. (Det. J. H. Miller). Duncan Island, Galapagos, June 7, 1932, *Howell*. (Det. J. H. Miller).

**Xylaria bulbosa** (P. ex Fr.) B. and Br., Berk., Outlines Brit. Fungology, 385, 1860. Academy Bay, Indefatigable Island, Galapagos, May 4, 1932, *Howell*. (Det. J. H. Miller).

**Xylaria hypoxylon** (L. ex Fr.) Grev., Flor. Edin., 355, 1824. Near Academy Bay, Indefatigable Island, Galapagos, May 8, 1932, *Howell*. (Det. J. H. Miller).

**Xylaria** sp. Five collections of *Xylaria* by Mr. Howell, from Indefatigable Island, Galapagos, were found to be sterile and not determinable as to species.

## BASIDIOMYCETES

## USTILAGINALES

**Mykosyrinx Cissi** (DC.) G. Beck, Ann. Nat. Hofmus. Wien, **9**: 123, 1894. On *Cissus sicyoides* L., Galapagos Islands, 1905–1906, Alban Stewart No. 7170, 7171; Fortuna, Indefatigable Island, Galapagos Islands, May 8, 1932, *Howell*.

## UREDINALES

**Bubakia Crotonis** (Cke.) Arth., Rés. Sci. Cong. Bot. Vienna, 339, 1906. On *Croton Masonii* Johnston, Braithwaite Bay, Socorro Island, March 27, 1932, *Howell*.

**Puccinia globosipes** Peck, Bull. Torr. Bot. Club, **12**: 34, 1885. On *Lycium minimum* L. C. Hitchcock, South Seymour Island, Galapagos, June 10, 1932, *Howell*.

**Puccinia heterospora** B. & C., Jour. Linn. Soc., **10**: 356, 1868. On *Abutilon californicum* Benth. (*A. avicennæ* Gaertn.) Braithwaite Bay, Socorro Island, March 26, 1932, *Howell*. On *Sida spinifera* L., Post Office Bay, Charles Island, Galapagos, May 17, 1932, *Howell*.

**Puccinia Lantanæ** Farl., Proc. Amer. Acad. Sci., **18**: 83, 1883. On *Lantana* sp., Academy Bay, Indefatigable Island, Galapagos, May 2, 1932, *Howell*.

**Puccinia Lithospermi** Ell. & Kell., Jour. Mycol., **1**: 2, 1885. On *Evolvulus hirsutus* Lam. (*E. alsinoides* L.), Tagus Cove, Albemarle Island, Galapagos, May 26, 1932, *Howell*.

**Puccinia notha** Jack. and Holw., Bot. Gaz., **65**: 305, 1918. On *Vernonia littoralis* Brandegee, Socorro Island, March 26, 1932, *Howell*.

**Puccinia striolata** Arthur, Mem. Torr. Bot. Club, **17**: 142, 1918. On *Irisene celosia* L., Clarion Island, March 23, 1932, *Howell* No. 8366.

**Uredo Scalesiæ** Bonar, new species

Uredia amphigena, dispersa, minuta, disciformia, pulverulenta, fusca, epidermide folii rupta inconspicua; sporidia subglobosa, sæpe lateraliter applanata, 18–24 x 20–26  $\mu$ , pariete cinnamomeo, 1–2.5  $\mu$  crasso, subtilissime verruculoso, poris 2, subæquatorialibus, in lateribus applanatis dispositis; paraphyses plurimæ, cum sporidiis intermixtæ, elongato-clavatæ, 80–100  $\mu$  longæ, apicibus usque ad 5  $\mu$  diam. tumefactis.

Uredia minute, scattered, amphigenous, discoid, pulverulent, chocolate brown, ruptured epidermis inconspicuous; urediospores asymmetric globoid, often flattened laterally, 18–24 x 20–26  $\mu$ , wall cinnamon brown, 1–2.5  $\mu$  thick, very finely ver-

rucose, pores 2, subequatorial, borne on the flattened sides; paraphyses very numerous, intermixed with the urediospores, elongate clavate, 80–100  $\mu$  long, the tips swollen to 5  $\mu$  diameter.

*Type*: No. 261371, C. A. S. Herb. On leaves of *Scalesia gummifera* Hooker f., west side of Albemarle Island, 20 miles north of Iguana Cove, Galapagos, May 22, 1932, *Howell*. This species seems close to *Puccinia æmulans* Syd., but the abundant paraphyses are distinctive in this species on *Scalesia*.

**Uromyces Blainvilleæ** Berk., Jour. Linn. Soc. Bot., **14**: 92, 1875. On *Blainvillea dichotoma* (Murr.) Cass., James Bay, James Island, Galapagos, June 4, 1932, *Howell*.

**Uromyces proeminens** (DC.) Pass., Rab. Fungi Eur., 1795, 1873. On *Euphorbia thymifolia* L., Punta Arenas, Costa Rica, June 26, 1932, *Howell*.

**Uromyces proeminens-euphorbiicola** (Tranz.) Arthur, Man. Rust. U. S., 309, 1934. On *Euphorbia pilifera* L., near Villamil, Albemarle Island, Galapagos, April 27, 1932, *Howell*. On *Euphorbia pilifera* L. Wreck Bay, Chatham Island, Galapagos, April 15, 1932, *Howell*.

#### AURICULARIALES

##### *Auriculariaceæ*

**Auricularia polytricha** (Mont.) Pat., Sacc. Syll., **6**: 766, 1888. On dead wood, Braithwaite Bay, Socorro Island, March 27, 1932, *Howell*.

**Auricularia rosea** Burt, Ann. Mo. Bot. Gard., **8**: 391, 1921. Socorro Island, March 27, 1932, *Howell*. Slope of Coseguina Volcano, Gulf of Fonseca, Nicaragua, July 6, 1932, *Templeton Crocker*.

#### DACROMYCETALES

##### *Dacromycetaceæ*

**Guepinia fissa** Berk., Ann. Mag. Nat. Hist., **10**: 383, 1842. On dead wood, east side of Albemarle Island, Galapagos, May 30, 1932, *Templeton Crocker*.

#### AGARICALES

##### *Thelephoraceæ*

**Hymenochæte luteo-badia** (Fr.) Wakf., Kew Bull., No. 1, 13, 1917. Fortuna, Indefatigable Island, Galapagos, May 11, 1932, *Howell*. (Det. E. M. Wakefield).

**Stereum affine** Lev., Ann. Sci. Nat., (III) **2**: 210, 1844. Cocos Island, Sept. 7, 1905, *Stewart No. 1439*. (Det. E. M. Wakefield).



**Stereum duriusculum** B. and Br., Jour. Linn. Soc., **14**: 66, 1875. Charles Island, Galapagos, Oct. 10, 1905, *Stewart Nos. 966, 967, 975, 976*. (Det. E. M. Wakefield).

**Stereum lobatum** (Knze.) Fr., Epicr., 547, 1838. Wafer Bay, Cocos Island, June 28, 1932, *Templeton Crocker*. (Det. C. J. Humphrey).

**Stereum rimosum** (Berk.) Hook., Kew Jour., **169**, 1851. Cocos Island, Sept. 12, 1905, *Stewart No. 1529*. (Det. E. M. Wakefield).

#### *Clavariaceæ*

**Pterula capillaris** Lev., Ann. Sci. Nat., (III) **2**: 208, 1844. On wood, Fortuna, Indefatigable Island, Galapagos, May 13, 1932, *Howell*.

#### *Hydnaceæ*

**Hydnodon thelephorum** (Lev.) Banker, Mycologia, **5**: 297, 1913. Charles Island, Galapagos, Feb. 28, 1906, *Stewart No. 4190*. (Det. L. W. Miller).

**Odontia uda** (Fr.) Bres. ? Atti Accad. Rovereto, **3**: 97, 1897. Cocos Island, Sept. 12, 1905, *Stewart Nos. 1520, 1536*. (Det. L. W. Miller.)

#### *Polyporaceæ*

**Fomes rimosus** Berk., Fr. Nov. Symb. Myc., **66**: 1851. On stump, Maria Magdalena Island, May, 1925, *Mason*. Maria Madre Island, May, 1925, *Mason*. Tagus Cove, Albemarle Island, Galapagos, May 25, 1932, *H. W. Clark*.

**Fulvofomes melleicinctus** Murr., Murrill, Tropical Polypores, **85**, 1915. James Bay, James Island, Galapagos, Aug. 8, 1906, *Stewart No. 6078*.

**Ganoderma Curtisii** (Berk.) Murr., N. Amer. Fl., **9**: 120, 1908. Jervis Island, Galapagos, Dec. 10, 1905, *Stewart No. 3813*.

**Ganoderma flaviporum** Murr., N. Amer. Fl., **9**: 116, 1908. Port Parker, Costa Rica, July 3, 1932, *H. W. Clark*.

**Ganoderma pulverulatum** Murr., N. Amer. Fl., **9**: 121, 1908. James Bay, James Island, Galapagos, June 12, 1932, *Howell*.

**Ganoderma subincrustedatum** Murr. N. Amer. Fl., **9**: 122, 1908. Charles Island, Galapagos, Oct. 5, 1905, *Stewart No. 778*.

**Polyporus abietinus** (Dicks.) Fr., Syst. Mycol., **1**: 370, 1821. On dead pine, N. end Guadalupe Island, Nov. 15, 1931, *Howell*.

**Polyporus Cowellii** Murr., Bull. Torr. Bot. Club, **31**: 39, 1904. Cocos Island, Sept. 4, 1905, *Stewart No. 1447*.

**Polyporus licnoides** Mont., Pl. Cell. Cuba, 243, 1845. Slope of Coseguina Volcano, Gulf of Fonseca, Nicaragua, July 6, 1932, *Templeton Crocker*.

**Polyporus membranaceus** (Sw.) Fr., Syst. Mycol., **1**: 370, 1821. Slope of Coseguina Volcano, Gulf of Fonseca, Nicaragua, July 6, 1932, *Templeton Crocker*.

**Polyporus pavonius** (Hook.) Fr., Epicr. Syst. Mycol., 477, 1838. Slope of Coseguina Volcano, Gulf of Fonseca, Nicaragua, July 6, 1932, *Templeton Crocker*.

**Polyporus porrectus** (Murr.) Sacc. and Trott., Syll. Fung., **23**: 374, 1925. Slope of Coseguina Volcano, Gulf of Fonseca, Nicaragua, July 6, 1932, *Templeton Crocker*.

**Polyporus sanguineus** (L.) Fr., Nov. Symbol. Myc., 75, 1851. On dead logs, Maria Madre Island, May 1925, *H. L. Mason*. On dead wood, Braxillito Bay, Costa Rica, July 1, 1932, *Howell*.

**Polyporus spathulatus** (Hook.) Mont., Ann. Sci. Nat., IV, **1**: 125, 1854. Near Academy Bay, Indefatigable Island, Galapagos, May 4, 1932, *Howell*. On ground, near summit of Tagus Cove Mountain, elev., 3900 ft., Albemarle Island, Galapagos, May 26, 1932, *Howell*.

**Polyporus tabacinus** Mont., Ann. Sci. Nat., (II), **3**: 349, 1835. Cocos Island, Sept. 12, 1905, *Stewart No. 1537*. (Det. C. J. Humphrey).

**Polyporus tricholoma** Mont., Ann. Sci. Nat., (II), **8**: 365, 1837. South Albemarle Island, Galapagos, Aug. 23, 1906, *Stewart No. 6701*. Cocos Island, Sept. 12, 1906, *Stewart No. 1556*. Near Academy Bay, Indefatigable Island, Galapagos, May 8, 1932, *Howell*. James Bay, James Island, Galapagos, June 4, 1932, *Howell*.

**Trametes hispida** Pass., Nouv. Giorn. Bot. Ital., **4**: 155, 1872. Tres Marias Islands, May, 1925, *Mason*.

**Trametes rigida** Berk. and Mont., Ann. Sci. Nat. (III), **11**: 240, 1849. On dead wood, Socorro Island, March 27, 1932, *Howell*. (Det. C. J. Humphrey).

*Agaricaceæ*

**Lentinus orinocensis** Pat., Bull. Soc. Myc., **4**: 21, 1888. Tagus Cove, Albemarle Island, Galapagos, May 24, 1932, *Howell*.

**Lentinus villosus** Klotzsch, Linnæa, **8**: 479, 1833. Socorro Island, March 27, 1932, *Howell*. Maria Magdalena Island, May, 1925, *Mason*. (Det. C. H. Kauffman).

**Marasmius siccus** (Schw.) Fr., Epicr. Myc., 382, 1838. Near Academy Bay, Indefatigable Island, Galapagos, May 4, 1932, *Howell*.

**Montagnites argentina** Speg., Fg. Arg. novi r crit., 160, 1899. Lower California, Mexico, Cape San Lucas, Aug. 7, 1932, *Howell*.

**Montagnites tenuis** Pat., Jour. de Bot., **8**: 219, 1894. On beach sand, Gardner Bay, Hood Island, Galapagos, April 20, 1932, *H. W. Clark*. On sand, South Seymour Island, Galapagos, June 10, 1932, *Howell*.

**Schizophyllum commune** Fr., Syst. Myc., **1**: 330, 1821. On wood, near Academy Bay, Indefatigable Island, Galapagos, May 8, 1932, *Howell*. On wood, James Island, Galapagos, June 4, 1932, *Howell*. Abingdon Island, Galapagos, Sept. 21, 1906, *Stewart No. 8779*. Basso Point, Chatham Island, Galapagos, Feb. 8, 1906, *Stewart Nos. 2119, 2120*.

**Tubaria** sp. Near Fortuna, Indefatigable Island, Galapagos, May 12, 1932, *Howell*.

## GASTEROMYCETES

**Bovista plumbea** Pers., Syn. Fung., 137, 1801. Guadalupe Island, March 17, 1932, *Howell*.

**Bovistella** sp. Near Academy Bay, Indefatigable Island, Galapagos, May 4, 1932, *Howell*.

**Calvatia cyathiformis** (Bosc) Morgan, Jour. Cin. Soc. Nat. Hist., **12**: 168, 1890. Near Fortuna, Indefatigable Island, Galapagos, May 12, 1932, *Howell*. Near James Bay, James Island, Galapagos, Aug. 8, 1906, *Stewart Nos. 6190-6197*. South Albemarle Island, Galapagos, Aug. 23, 1906, *Stewart Nos. 6758, 6759*.

**Cyathus rugispermus** (Schw.) DeToni, Sacc. Syll., **7**: 42, 1888. On rotting wood, Braxillito Bay, Costa Rica, July 1, 1932, *Howell*.

**Geaster triplex** Jungh., Tidskr. Natur. Geschiedenis, **7**: 287, 1840. Charles Island, Galapagos, April 25, 1932, *Howell*. Near Academy Bay, Indefatigable Island, Galapagos, May 4, 1932, *Howell*.

**Mycenastrum corium** Desv., Ann. Sci. Nat., (II) **17**: 147, 1842. James Bay, James Island, Galapagos, Jan. 3, 1906, *Stewart No. 3721*.

**Myriostoma coliforme** (Pers.) Corda, Anleit., Tab. D., fig. 16-17, 1842. Near Academy Bay, Indefatigable Island, Galapagos, May 8, 1932, *Howell*.

**Phellorinia inquinans** Berk., Lond. Jour. Bot., **2**: 421, 1843. South Seymour Island, Galapagos, June 10, 1932, *H. W. Clark*.

**Podaxis pistillaris** (L. ex Pers.) Fr., Syst. Myc., **3**: 63, 1829. Near Gardner Bay, Hood Island, Galapagos, June 26, 1906, *Stewart No. 7532*.

**Tulostoma granulosum** Lev., Demidoff. Voy., 120, 1842. Guadalupe Island, March 16, 1932, *Howell*.

**Tulostoma occidentale** Lloyd, Mycol. Writings, **2**: Tyl. 13, 1906. South Seymour Island, Galapagos, June 10, 1932, *Howell*.